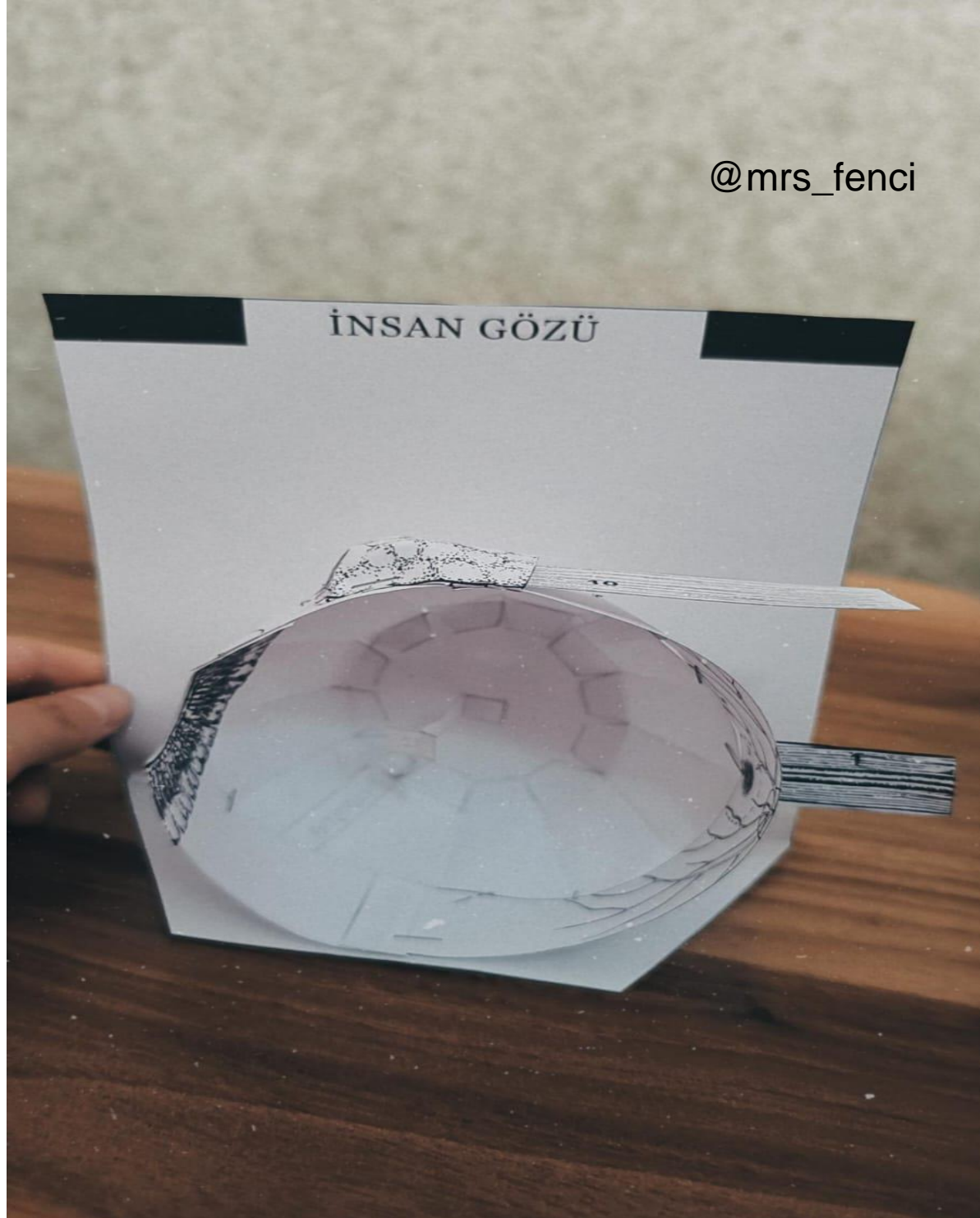
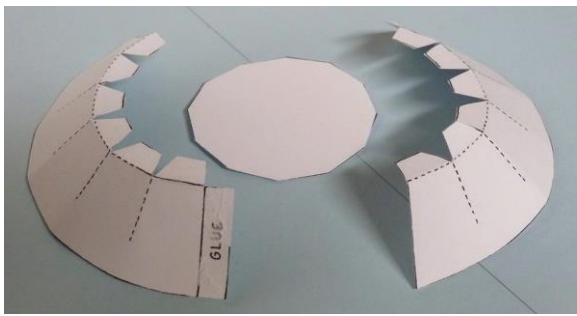
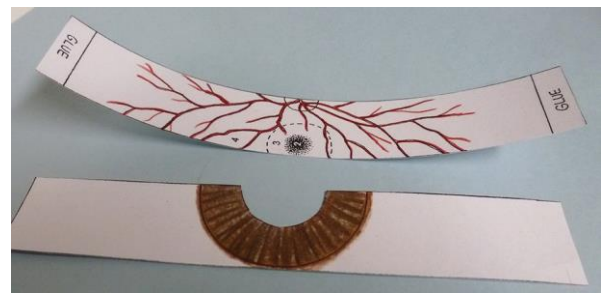


# GÖZ MODELİ

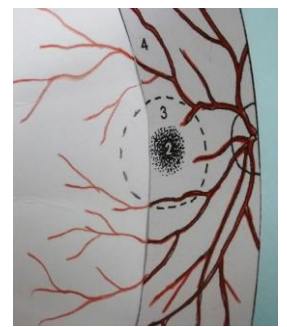
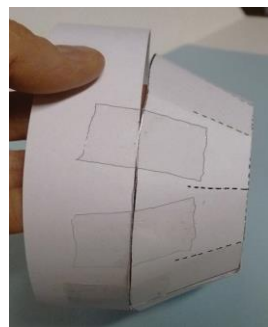
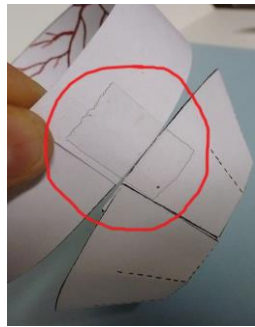




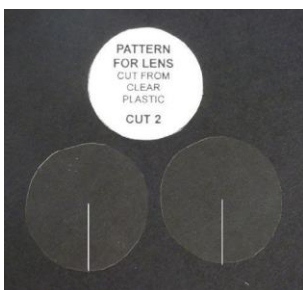
4



5



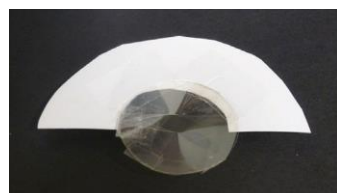
@mrs\_fenci



11

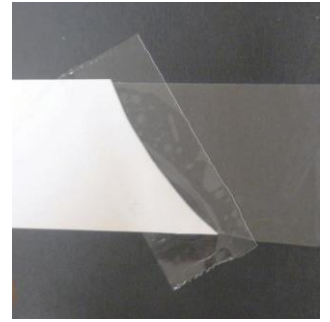
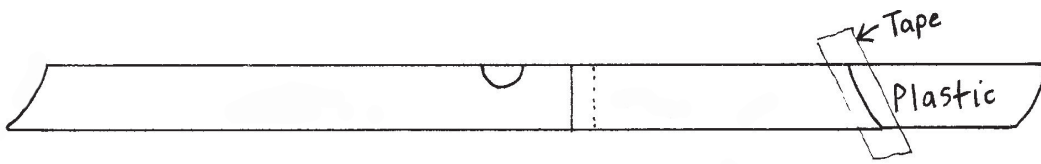


13



14

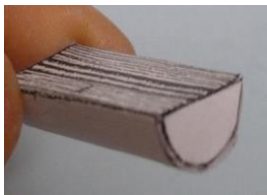




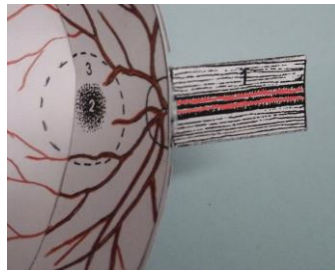
@mrs\_fenci



19

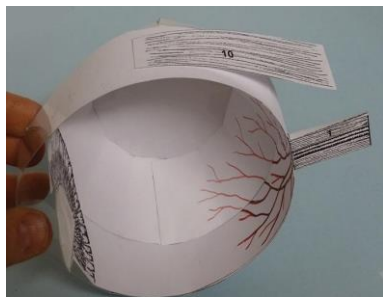
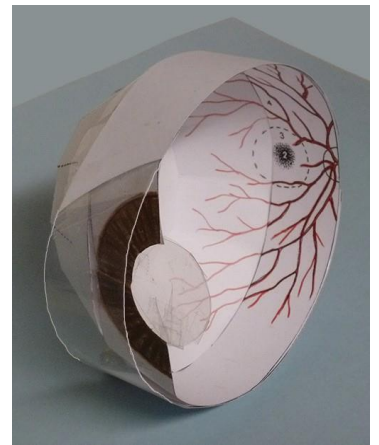


20

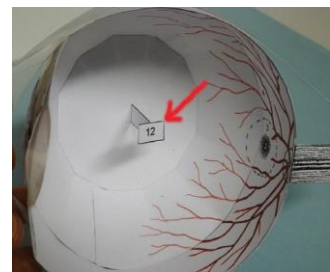
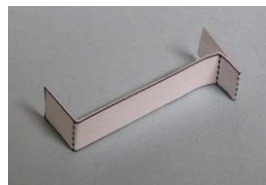
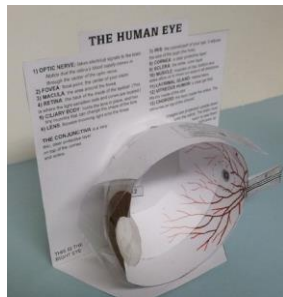


21

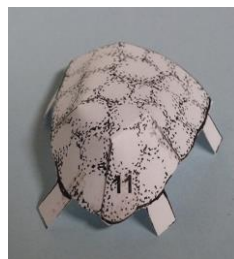
18



16



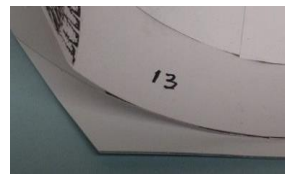
24



25

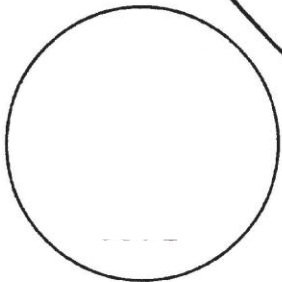
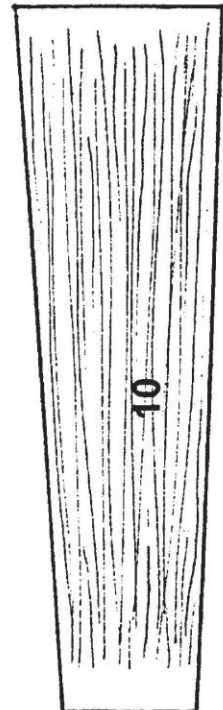
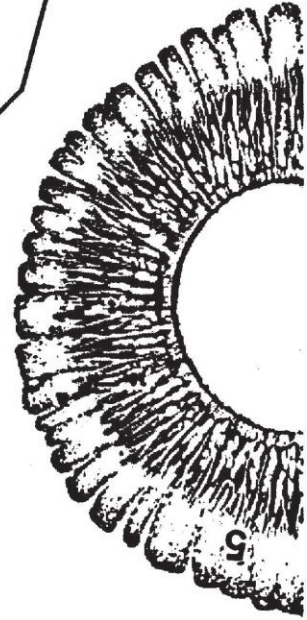
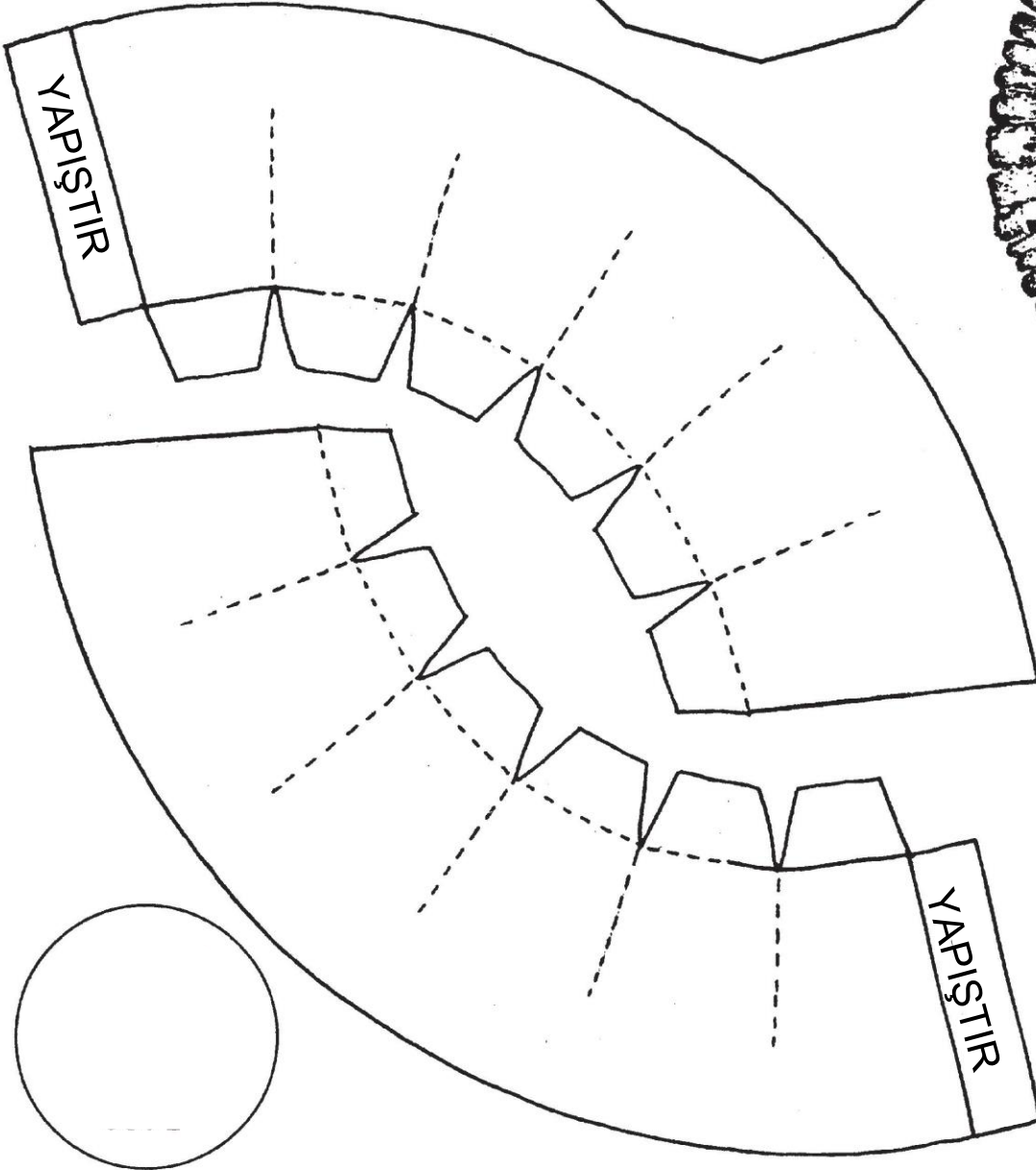
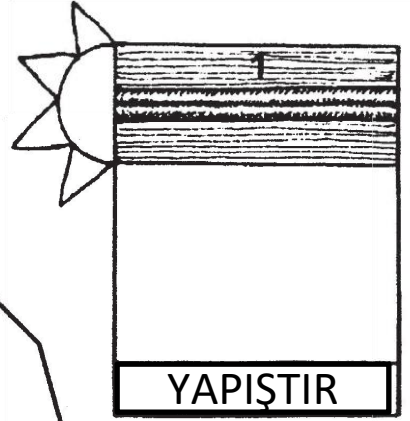
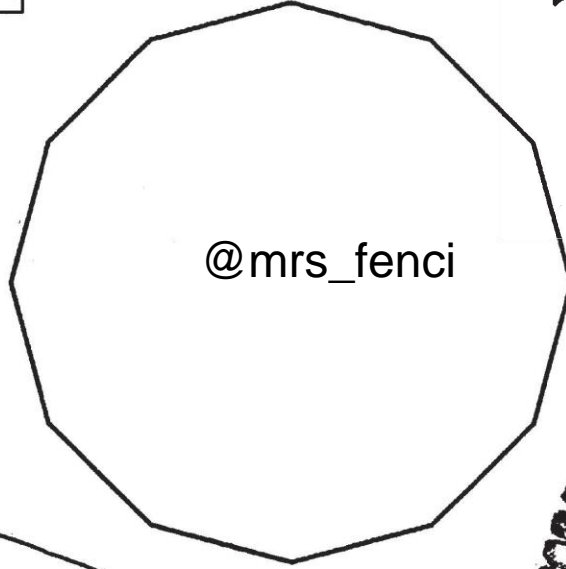
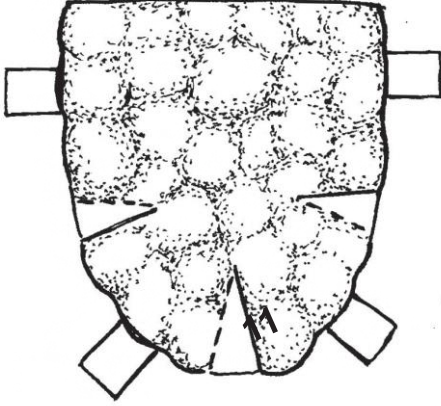
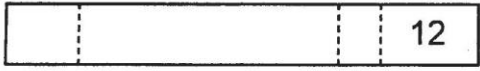


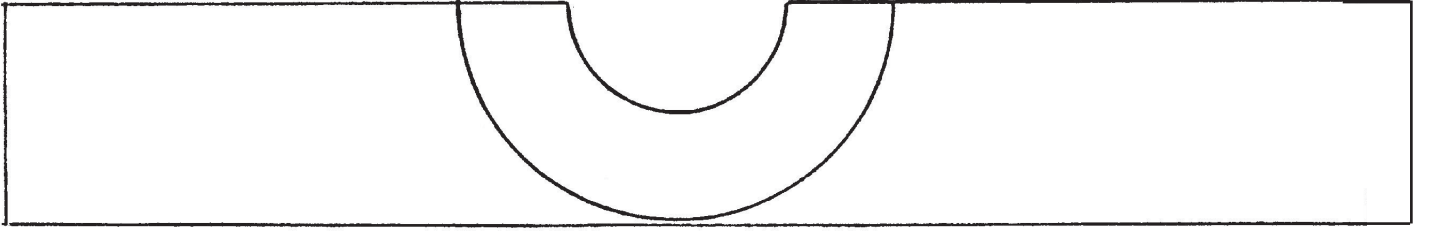
26



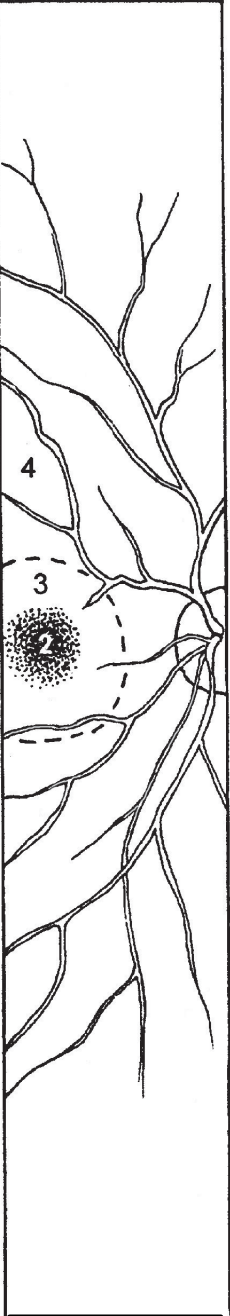
26



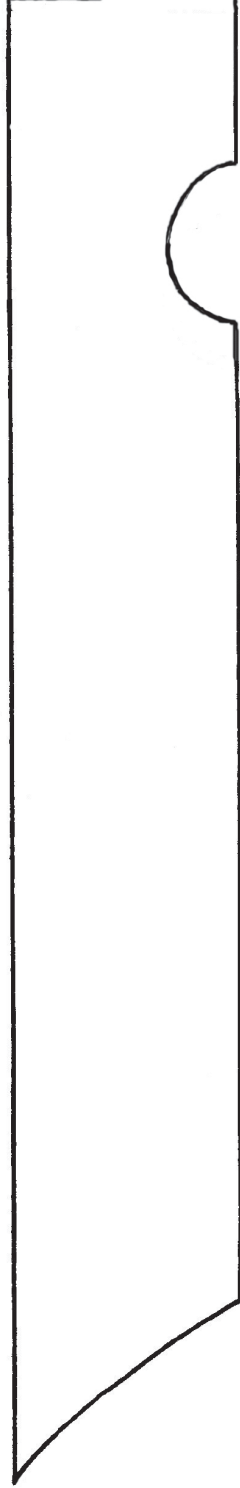




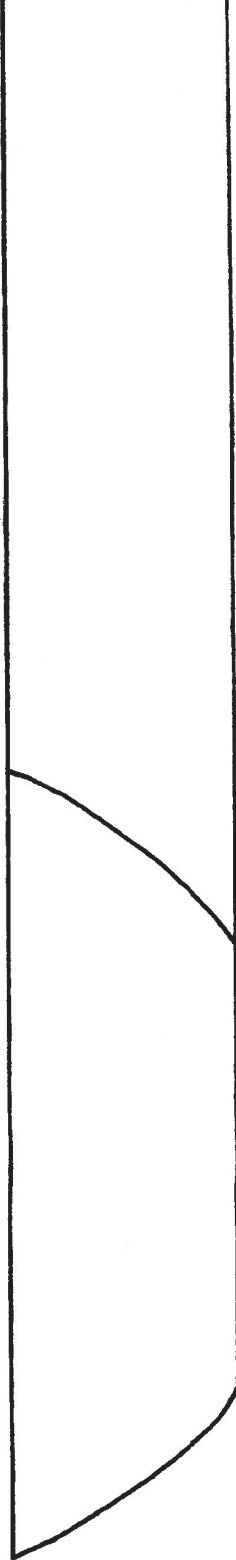
YAPIŞTIR



YAPIŞTIR



YAPIŞTIR



# İNSAN GÖZÜ

Göz dıştan içe doğru sert tabaka, damar tabaka ve ağ tabaka(retina) dan oluşur.

## 1.Sert Tabaka :

Göz en dışındaki beyaz renkli tabakadır. Gözü dış etkiler karşı korur ve göz yuvarlağına dayanıklılık kazandırır. Sert tabaka göz yuvarlağının ön kısmında incelererek saydam bir yapı kazanır. Işığın ilk defa kırıldığı bu saydam tabakaya kornea denir. Kornea gelen ışığı göz bebeğinde toplar. Sert tabakada kan damarları bulunmaz.

## 2.Damar Tabaka:

Damar tabakada bulunan kan damarları gözü besler. Damar tabaka gözün ön kısmında farklılaşarak iris, göz bebeği ve göz merceğini oluşturur. İris Gözün renkli kısmıdır. Göz bebeği İrisin ortasındaki boşluktur. Işık fazla gelirse küçülür, az gelirse büyür. Göz merceği İrisin arkasında bulunur. İnce kenarlı mercektir. Gelen ışığın ağ tabaka üzerinde ters görüntü oluşturmasını sağlar. Göz uyumu Net bir görüntü için göz merceğinin incelik, kalınlaşmasıdır. Camsı cisim Göz merceği ile ağ tabaka arasını dolduran sıvıdır. Gözün şeklini ve göz merceğinin yerinde kalmasını sağlar.

## 3.Ağ tabaka (Retina)

Işığa duyarlı almaçlar bulunur. Oluşan görüntü sinir hücreleri ile beyne iletilir. Sarı leke (benek) Görüntünün oluştuğu yerdir. Kör nokta Göz sinirlerinin gözden çıktığı yerdir. Işığa duyarlı değildir. @mrs\_fenci

